

## Analytical Report

Sample ID	1436 - Analysis Service - A0347
Expected	Progesterone
Sample adulterated or impure?	No
Sample Appearance	
Sample type	#N/A -
Date of sample receipt	05-Aug-2024
Date of analysis	10-Aug-2024
Date of Report	11-Aug-2024

### Qualitative and Quantitative Results

#### Substances identified

	Harm Reduction information	Chemical Class	Pubchem ID	Analytical techniques used
Progesterone 92%		Other	5994	FTIR/LCMS/NMR

\* uncertainty of measurement +/- 5 %

***The Analysis Report is not a warranty or advertisement for the quality of any supplier or product!  
We do not claim nor make any guarantees or recommendations regarding the safety of the analysed samples for human consumption.***

*Kykeon Analytics Ltd. assumes no liability for the results or for any damages that may arise from the use of the Analysis Report. The Analysis Report is not to be used for defence purposes in any type of proceeding without the explicit consent of KYKEON, its contents shall not be disclosed to any third party for marketing purposes. The Analysis Report shall not be altered, modified, amended, falsified, forged or changed in any way.*



Detailed information regarding our workflow including a full description of the analytical methods applied is freely available under <https://www.kykeonanalytics.com/services/users/>

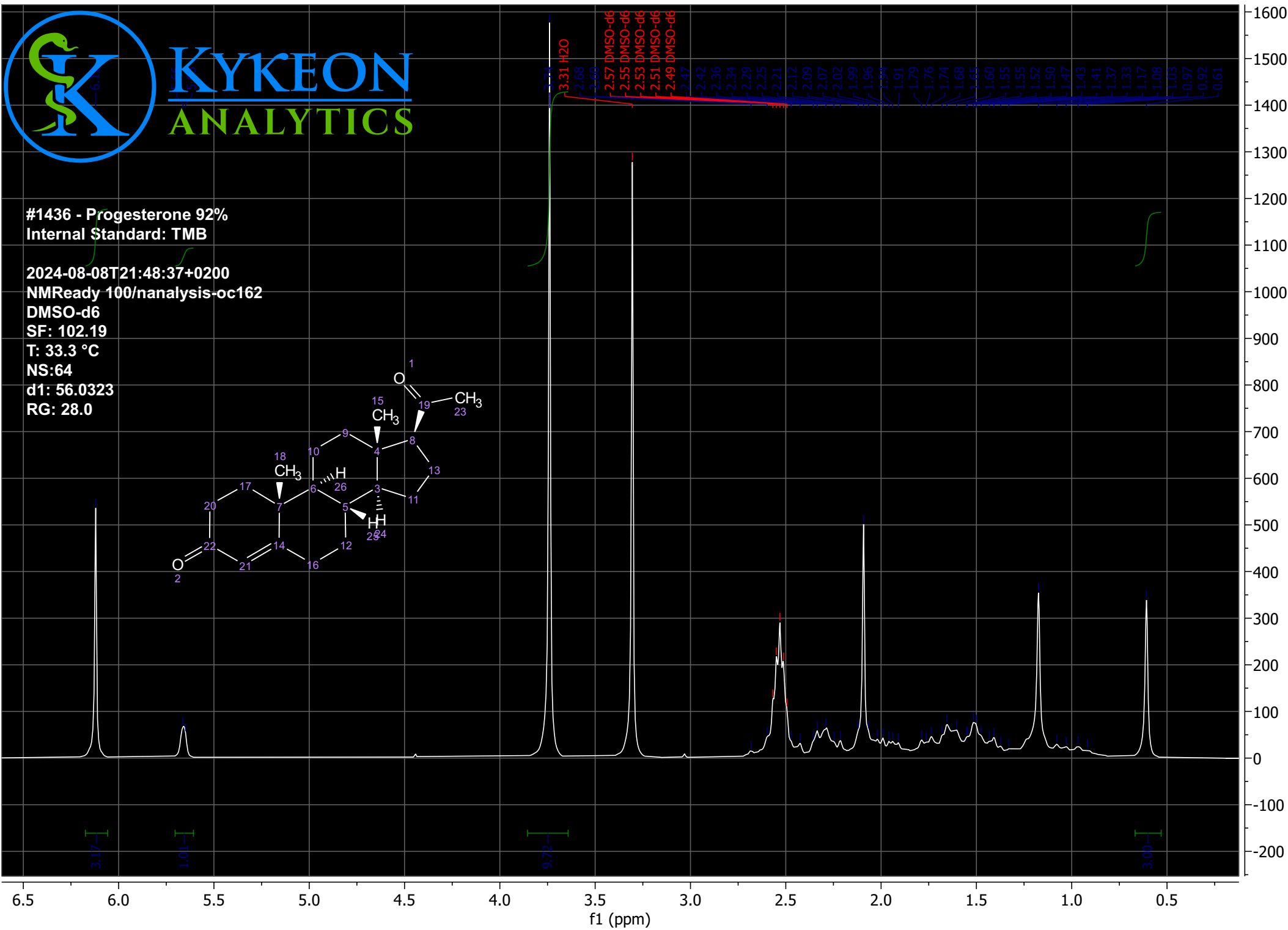
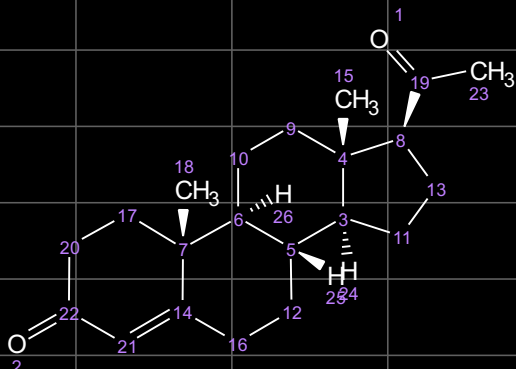
Attachments:

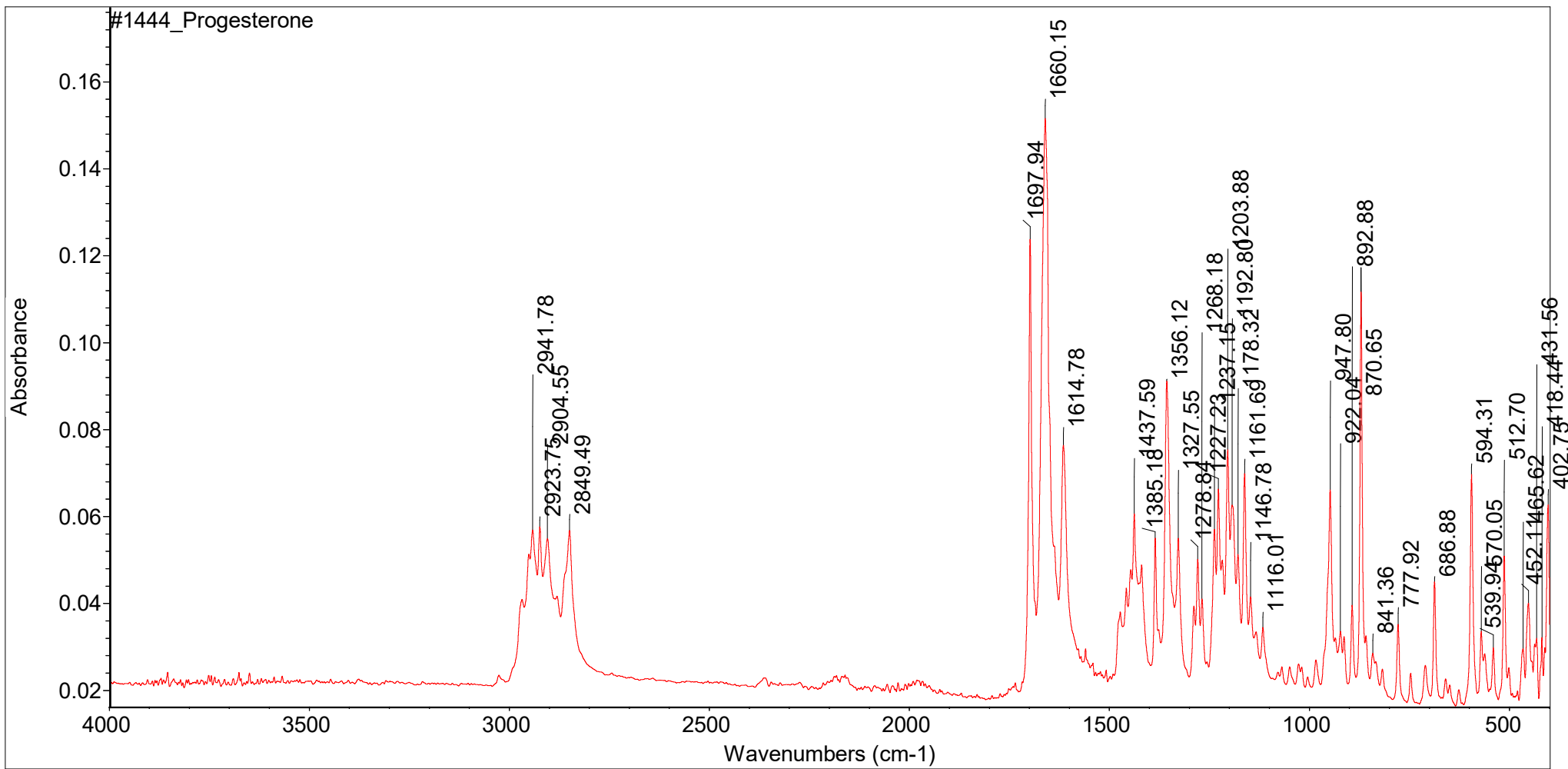


# KYKEON ANALYTICS

#1436 - Progesterone 92%  
Internal Standard: TMB

2024-08-08T21:48:37+0200  
NMReady 100/nanalysis-oc162  
DMSO-d6  
SF: 102.19  
T: 33.3 °C  
NS:64  
d1: 56.0323  
RG: 28.0





Mon Aug 05 11:35:22 2024 (GMT+02:00)

FIND PEAKS:

Spectrum: #1444\_Progesterone  
 Region: 4000.00 400.00  
 Absolute threshold: 0.027  
 Sensitivity: 50  
 Peak list:

Position:	Intensity:
402.75	0.0627
418.44	0.0321
431.56	0.0319
452.11	0.0400
465.62	0.0295
512.70	0.0510
539.94	0.0298
570.05	0.0336

Position:	594.31	Intensity:	0.0697
Position:	686.88	Intensity:	0.0449
Position:	777.92	Intensity:	0.0352
Position:	841.36	Intensity:	0.0285
Position:	870.65	Intensity:	0.112
Position:	892.88	Intensity:	0.0395
Position:	922.04	Intensity:	0.0335
Position:	947.80	Intensity:	0.0661
Position:	1116.01	Intensity:	0.0344
Position:	1146.78	Intensity:	0.0415
Position:	1161.69	Intensity:	0.0699
Position:	1178.32	Intensity:	0.0513
Position:	1192.80	Intensity:	0.0626
Position:	1203.88	Intensity:	0.0753
Position:	1227.23	Intensity:	0.0663
Position:	1237.15	Intensity:	0.0570
Position:	1268.18	Intensity:	0.0410
Position:	1278.84	Intensity:	0.0501
Position:	1327.55	Intensity:	0.0550
Position:	1356.12	Intensity:	0.0911
Position:	1385.18	Intensity:	0.0550
Position:	1437.59	Intensity:	0.0606
Position:	1614.78	Intensity:	0.0763
Position:	1660.15	Intensity:	0.152
Position:	1697.94	Intensity:	0.124
Position:	2849.49	Intensity:	0.0567
Position:	2904.55	Intensity:	0.0549
Position:	2923.75	Intensity:	0.0576
Position:	2941.78	Intensity:	0.0568

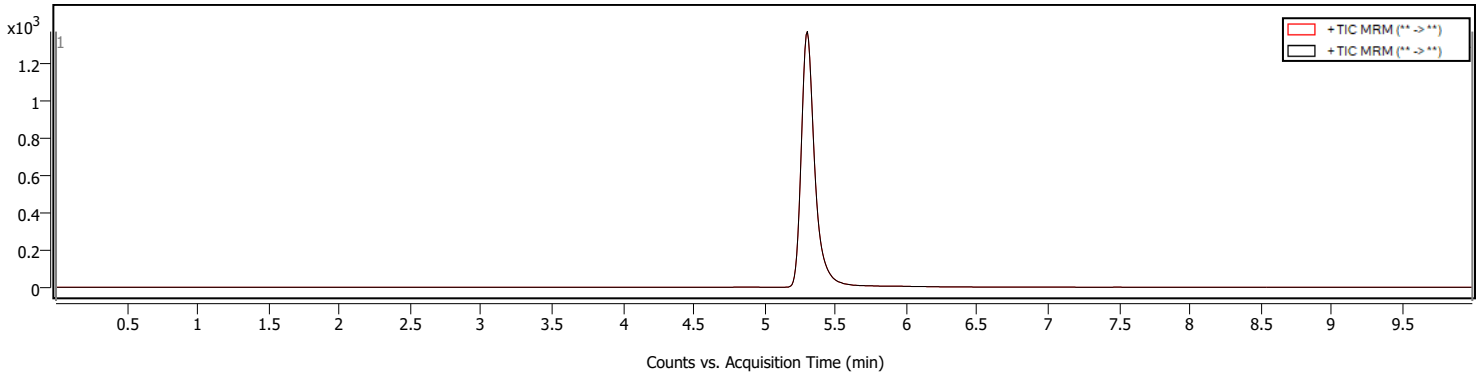
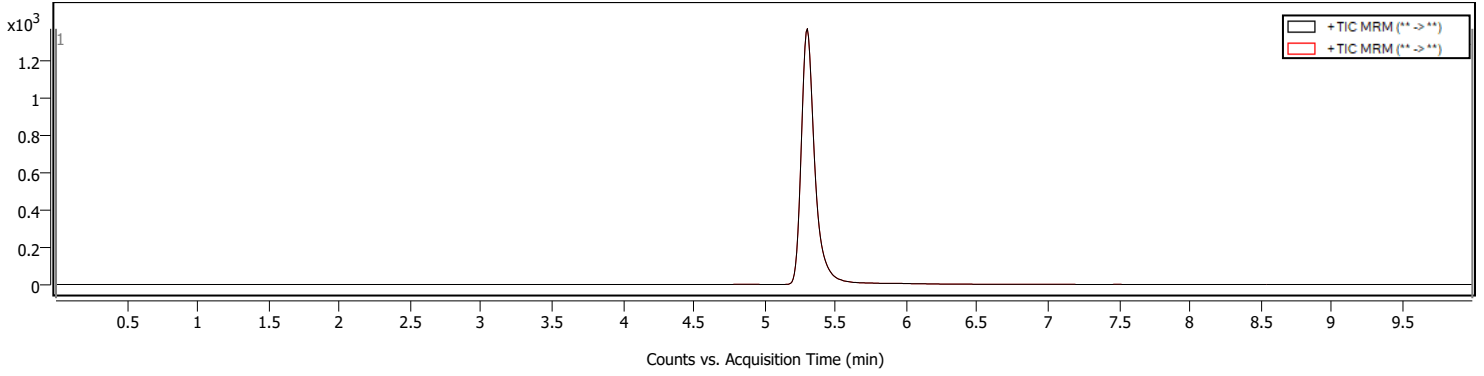
# Qualitative Analysis Report



## Sample Information

<b>Name</b>	1436_Progesterone	<b>Data File Path</b>	D:\Kykeon\Data\2024\08-06\1436_Progesterone_MRM.d
<b>Sample ID</b>		<b>Acq. Time (Local)</b>	8/6/2024 11:52:31 PM (UTC+02:00)
<b>Instrument</b>	Instrument 1	<b>Method Path (Acq)</b>	D:\Kykeon\methods\substances\Progesterone.m
<b>MS Type</b>	QQQ	<b>Version (Acq SW)</b>	Ultivo LC/TQ C.01.00 (B1677.1 SR1)
<b>Inj. Vol. (ul)</b>	1	<b>IRM Status</b>	
<b>Position</b>	P2-A6	<b>Method Path (DA)</b>	D:\Kykeon\methods\ReportWorkflowMethod-MRM.m
<b>Operator</b>		<b>Result Summary</b>	1 qualified (1 targets)

## Sample Chromatograms



## Compound Summary

Cpd	Name	Formula	Mass	RT	Area	m/z	Algorithm
1	Progesterone			5.305	8144	315.0	MRM

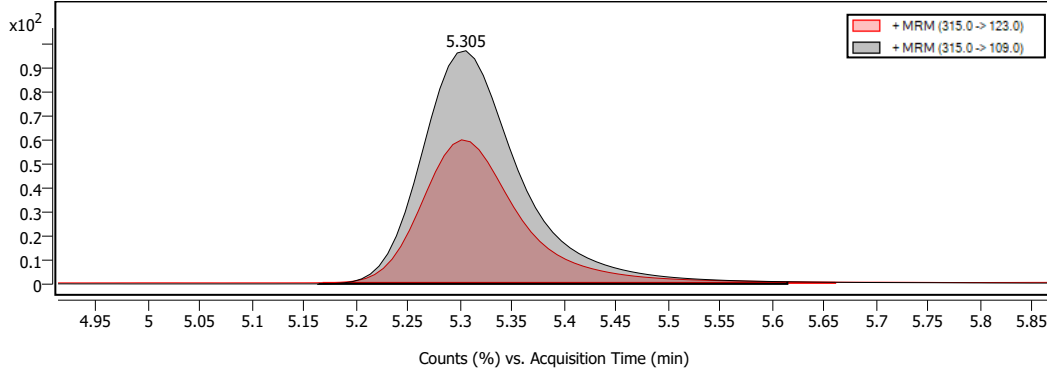
# Qualitative Analysis Report

## Compound Details

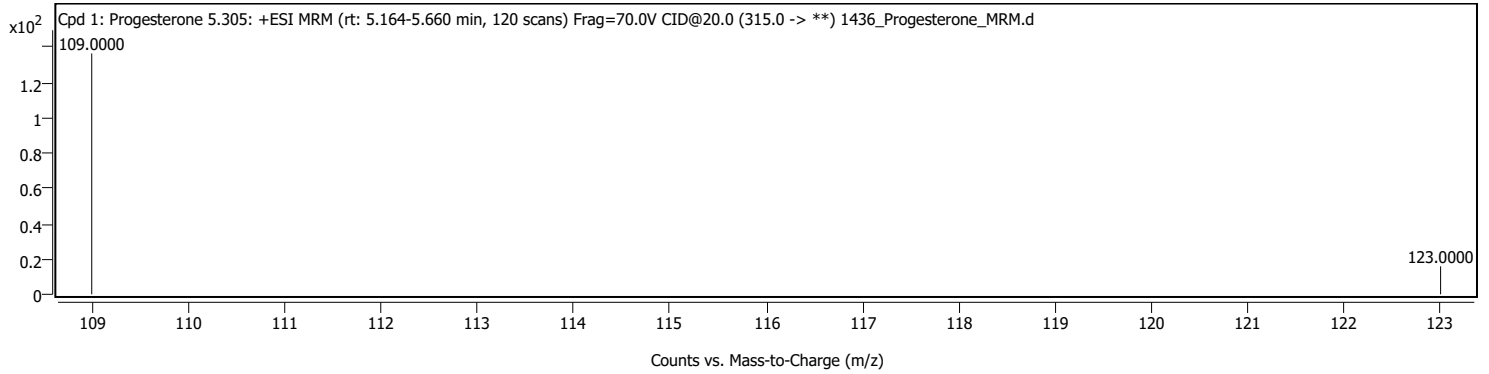
### Cpd. 1: Progesterone

Name	Formula	Mass	RT	Area	m/z	m/z (primary prod.)	CE	FV	Algorithm
Progesterone			5.305	8144	315.0	109.0	20.00		MRM

### Compound Chromatograms (overlaid)



### MS/MS Spectra



MassHunter Qual 10.0  
(End of Report)